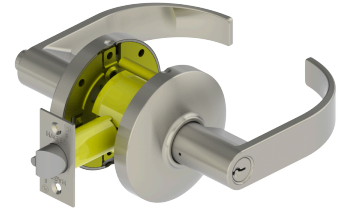


3500 Series General Information Page

Applications

Standard duty commercial



PRODUCT SPECIFICATIONS

Backsets:

- 2-3/4" (70 mm) - Standard
- 2-3/8" (60 mm) - Optional
- 3-3/4" (94 mm) - Optional (Lever only)
- 5" (128 mm) - Optional (Lever only)

Certifications:

- BHMA Certified ANSI A156.2, Series 4000, Grade 2
- ADA Compliant ANSI A117.1 Accessibility Code (Lever only)
- UL/cUL Listed for all functions up to 3 hours "A" label single doors (for double doors application, UL/cUL Listed when used with 3/4" latchbolt)
- ANSI A250.13 Severe Windstorm Component (Lever only)
- Miami-Dade County, Florida NOA# 17-1226.23, Exp. Aug. 16, 2022. Must specify. (Lever only)
- UL10C Positive Pressure Rated
- UL10B Neutral Pressure Rated

Cylinders/Cores:

- Brass 6-pin keyed different - Schlage C Keyway - standard
- Cylinder drilled 6 pin, Keyed 5 pin - standard
- Other keying options, including keyed 6-pin, available from factory
- Zero bit cylinders will be 6 pin - standard
- SFIC uncombined or combined, brass 6- or 7-pin sold separately
- Interchangeable Core option not available on the 3579 Apollo knobset function

Door Thickness:

- Levers: 1-3/8" - 2" (35 mm - 51 mm)
- Knobs: 1 3/8" - 1 3/4"

Exposed Trim:

- Levers: cast zinc
- Rose: wrought brass or stainless steel

Features:

- No exposed mounting screws
- Non-handed
- Conventional cylinder or Small Format Interchangeable Core housing available
- Free Wheeling Levers
- Removeable Thru-Posts (failure to install these posts voids BHMA certification, UL Rating, and Warranty)

Finishes:

- Levers: US3, US4, US10B, US26, US26D
- Levers: Anti-Microbial Coating (US26D finish only)
- Knobs: US3, US32D

Functions:

- 10 - Passage
- 17 - Dummy
- 25 - Exit (Lever only)
- 27 - BTB Dummy (Lever only)
- 40 - Privacy
- 50 - Office

- 53 - Entry
- 70 - Classroom
- 73 - Corridor (Lever only)
- 79 - Keyed Communicating
- 80 - Storeroom

Keys:

- Two operating keys supplied per lock

Knob Diameter:

- 2-9/32" (58 mm)

Latchbolt Type:

- 1/2" (13 mm) Throw Stainless steel
- 1-1/8" x 2-1/4" (25 mm x 57 mm) Faceplate for 2-3/4" (70 mm) backset
- Deadlocking latchbolt prevents manipulation when door is closed; keyed functions only
- 1" x 2-1/4" (25 mm x 57 mm) Faceplate for 2-3/8" (60 mm) backset

Lever Options:

- Apollo knob; Archer, August, Withnell levers

Lock Chassis:

- Heavy gauge steel, zinc dichromated for corrosion resistance
- Free wheeling (levers only)
- Removable thru-bolts (levers only)
- Failure to install thru-bolts and removable screw posts voids BHMA certification, UL Rating, and Warranty (levers only)

Notes:

- Blank plate projection is 13/16" (21 mm) for Functions 25 and 79
- Interchangeable Cores are not available on Apollo knob
- 2-1/8" diameter (cross bore)
- Latch hole: 1" diameter (edge bore)

Options:

- Lead Lined (Levers Only)
- Tactile Knurling (Levers Only)
- Split Finish
- Additional latchbolts and strikes available

Rose Diameter:

- 3-11/32" (85 mm) levers; 3" (76 mm) knobs

Strikes:

- 3935 ASA 1-1/4" x 4-7/8" (32 mm x 124 mm) strike - Standard

Warranty:

- Lifetime Warranty