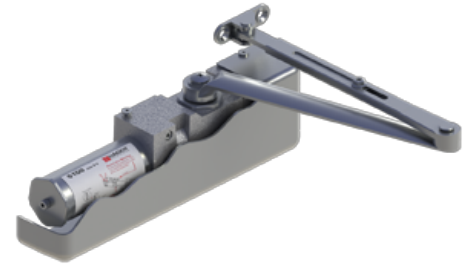


5100

Grade 1 Heavy Duty Surface Door Closer

Applications

Grade 1 heavy duty surface door closer adjustable sizes 1-6
Ideal for schools, hospitals, and other high-use environments



PRODUCT SPECIFICATIONS

Box Quantity:
1

Case Quantity:
4

Certifications:

BHMA Certified ANSI A156.4, adjustable sizes 1-6
ADA compliant ANSI A117.1 Accessibility Code
UL/cUL Listed for up to 3 hours
UL10C Positive Pressure Rated
UL10B Neutral Pressure Rated
5100 Door Closer EPD

Door Thickness:

1-3/4" (44 mm) - standard
1-3/8" - 2-1/4" (36 mm - 57 mm) thick door - optional

Door Width:

Minimum door width: 24"

Fasteners:

Self-reaming, self-tapping wood and machine screws
Sex nuts and bolts

Finishes:

ALM, BLK, BRZ, DBZ, GOL
Rust inhibiting primer - Standard

Handing:

Non-handed

Material:

Cast iron, treated with rust inhibiting primer - standard

Maximum Door Weight:

330 lbs.

Notes:

To maximize hinge life and assist in achieving ADA compliance, Hager recommends the use of anti-friction or ball bearing hinges with our door closer products.
The recommended temperatures for prolonged closer use is between -40° F (-42° C) and 150° F (66° C)
Any certified BHMA/ANSI A156.4 door closer, regardless of manufacturer, that is installed and adjusted based on ADA or other reduced opening force requirements may not provide sufficient power to reliably close and latch a door
If arms are ordered separately, there will be a significant difference in price than if purchased with a closer as a complete assembly.
See adders for more information (add the list price of the option to the list price of the closer and take standard discounts).
Accessories may not be available in all finishes. Please contact Hager for availability and lead time.

Optional Arms:

Tri-Pack Arm (Regular, Top Jamb and Parallel with Parallel Arm Bracket)- Standard
Hold Open Arm (HO) - 5107
Pull Side Stop Arm (PSS) - 5123
Pull Side Hold Open Stop Arm (PSHOS) - 5124
Extra Heavy Duty Arm (HD) - 5106
Extra Heavy Duty Stop Arm (HDS) - 5125
Extra Heavy Duty Hold Open Stop Arm (HDHOS) - 5961
Extra Heavy Duty Hold Open Arm (HDHO) - 5108
Extra Heavy Duty Cushion Stop Arm (HDCS)- 5955
Extra Heavy Duty Hold Open Cushion Stop Arm (HDHOCS)- 5954
Hold Open Stop Track Arm (HOTA)
Non-Hold Open Stop Track Arm (NHOTA)
Double Egress Hold Open Track Arm ((DEHOTA)
Double Egress Non-Hold Open Track Arm (DENHOTA)

Optional Brackets:

Extra clearance parallel arm bracket - 5935 (2")
Extra heavy duty parallel arm support bracket - 5111

Springs:

One piece seamless steel spring tube
Double heat-treated, steel-tempered springs
Precision-machined, heat-treated steel piston

Valves:

Adjustable backcheck, sweep, and latching valves- standard
Delayed action valve - optional
All valves are staked

Warranty:

Lifetime warranty